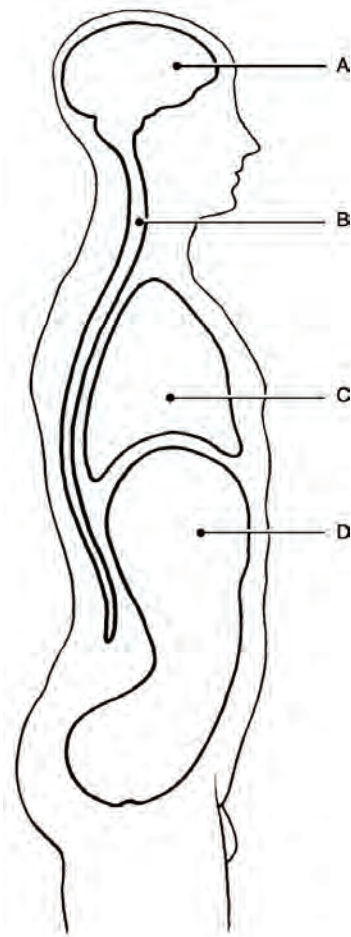


# Chapter 1 The Human Body: An Introduction

---

## Matching Questions



**Figure 1.1**

*Using Figure 1.1, match the following cavities:*

- 1) Thoracic cavity.

Answer: C

Diff: 1 Page Ref: 15–16; Fig. 1.9

- 2) Cranial cavity.

Answer: A

Diff: 1 Page Ref: 15–16; Fig. 1.9

- 3) Abdominal cavity.

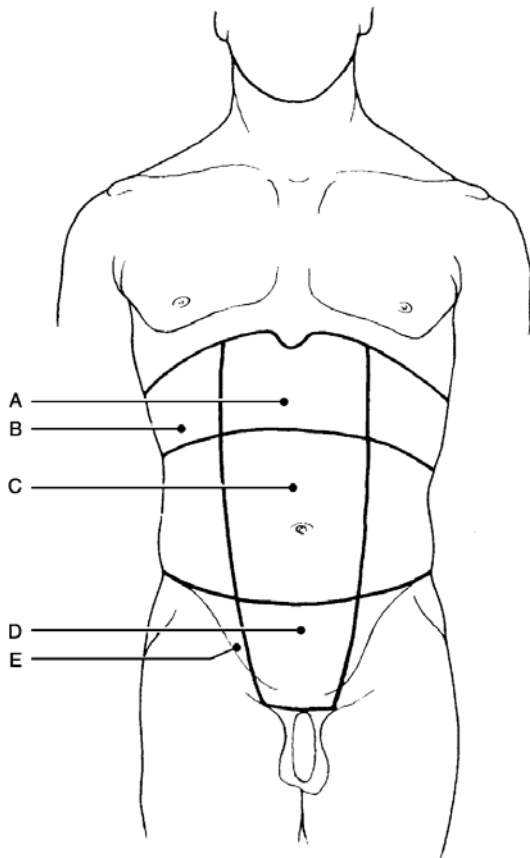
Answer: D

Diff: 1 Page Ref: 15–16; Fig. 1.9

4) Vertebral cavity.

Answer: B

Diff: 1 Page Ref: 15-16; Fig. 1.9



**Figure 1.2**

Using Figure 1.2, match the following regions:

5) Umbilical region.

Answer: C

Diff: 1 Page Ref: 17; Fig. 1.12

6) Right hypochondriac.

Answer: B

Diff: 1 Page Ref: 17; Fig. 1.12

7) Hypogastric (pubic) region.

Answer: D

Diff: 1 Page Ref: 17; Fig. 1.12

8) Epigastric region.

Answer: A

Diff: 1 Page Ref: 17; Fig. 1.12

9) Right iliac (inguinal) region.

Answer: E

Diff: 1 Page Ref: 17; Fig. 1.12

*Match the following systems to their functions:*

10) Directly causes mechanical motion.

Diff: 1 Page Ref: 6; Fig. 1.3c

11) Responds to environmental changes by transmitting electrical impulses.

Diff: 1 Page Ref: 6; Fig. 1.3d

12) Provides support and levers for muscles to work on.

Diff: 1 Page Ref: 6; Fig. 1.3b

13) Protects underlying organs from mechanical damage and synthesizes vitamin D.

Diff: 2 Page Ref: 6; Fig. 1.3a

A) Muscular

B) Skeletal

C) Integumentary

D) Nervous

Answers: 10) A                    11) D                    12) B                    13) C

*Match the following systems to their functions:*

14) Controls the body with chemical molecules called hormones.

Diff: 2 Page Ref: 6; Fig. 1.3e

15) Delivers oxygen and nutrients to the tissues.

Diff: 1 Page Ref: 6; Fig. 1.3f

16) Produces antibodies that neutralize foreign substances.

Diff: 1 Page Ref: 7; Fig. 1.3g

17) Removes and filters excess fluid from tissues.

Diff: 1 Page Ref: 7; Fig. 1.3g

A) Immune

B) Endocrine

C) Cardiovascular

D) Lymphatic

Answers: 14) B                    15) C                    16) A                    17) D

Match the following examples of feedback mechanisms:

- |  |                      |
|--|----------------------|
| 18) Blood glucose levels<br>Diff: 2 Page Ref: 9-10 | A) Negative feedback |
| 19) Blood pressure<br>Diff: 3 Page Ref: 9-10       | B) Positive feedback |
| 20) Blood clotting<br>Diff: 2 Page Ref: 9-10       |                      |
| 21) Delivering a baby<br>Diff: 2 Page Ref: 9-10    |                      |

Answers: 18) A      19) A      20) B      21) B

Match the following systems and organs:

- |   |                   |
|---|-------------------|
| 22) Arteries, veins, heart.<br>Diff: 1 Page Ref: 6; Fig. 1.3f                 | A) Digestive      |
| 23) Trachea, bronchi, alveoli.<br>Diff: 1 Page Ref: 7; Fig. 1.3h              | B) Cardiovascular |
| 24) Adrenal glands, pancreas,<br>pituitary.<br>Diff: 1 Page Ref: 6; Fig. 1.3e | C) Urinary        |
| 25) Esophagus, large intestine,<br>rectum.<br>Diff: 1 Page Ref: 7; Fig. 1.3i  | D) Respiratory    |
| 26) Kidneys, bladder, ureters.<br>Diff: 1 Page Ref: 7; Fig. 1.3j              | E) Endocrine      |

Answers: 22) B      23) D      24) E      25) A      26) C

Match the following cavities and organs:

- |  |                   |
|--|-------------------|
| 27) Stomach.<br>Diff: 1 Page Ref: 15; Fig. 1.9 | A) Cranial        |
| 28) Heart.<br>Diff: 1 Page Ref: 15; Fig. 1.9   | B) Abdominopelvic |
| 29) Uterus.<br>Diff: 1 Page Ref: 15; Fig. 1.9  | C) Thoracic       |
| 30) Brain.<br>Diff: 1 Page Ref: 15; Fig. 1.9   |                   |
| 31) Lungs.<br>Diff: 1 Page Ref: 15; Fig. 1.9   |                   |

Answers: 27) B                      28) C                      29) B                      30) A                      31) C

Match the following regional terms and common terms:

- |   |             |
|---|-------------|
| 32) Arm.<br>Diff: 1 Page Ref: 13; Fig. 1.7                    | A) Brachial |
| 33) Buttock.<br>Diff: 1 Page Ref: 13; Fig. 1.7                | B) Gluteal  |
| 34) Head.<br>Diff: 1 Page Ref: 13; Fig. 1.7                   | C) Cephalic |
| 35) Knee (anterior aspect).<br>Diff: 1 Page Ref: 13; Fig. 1.7 | D) Patellar |
| 36) Chest.<br>Diff: 1 Page Ref: 13; Fig. 1.7                  | E) Thoracic |

Answers: 32) A                      33) B                      34) C                      35) D                      36) E

Match the regional/directional terms and examples:

- 37) The bridge of the nose is \_\_\_\_\_ to the left eye.  
Diff: 2 Page Ref: 12; Tbl. 1.1
- 38) The upper arm is \_\_\_\_\_ to the forearm.  
Diff: 2 Page Ref: 12; Tbl. 1.1
- 39) The heart is \_\_\_\_\_ to the stomach.  
Diff: 2 Page Ref: 12; Tbl. 1.1
- 40) The fingers are \_\_\_\_\_ to the wrist.  
Diff: 2 Page Ref: 12; Tbl. 1.1
- 41) The stomach is \_\_\_\_\_ to the spine.  
Diff: 2 Page Ref: 12; Tbl. 1.1
- A) Medial  
B) Distal  
C) Proximal  
D) Anterior  
E) Superior

Answers: 37) A            38) C            39) E            40) B            41) D

### True/False Questions

- 1) Positive feedback mechanisms tend to increase the original stimulus.  
Answer: TRUE  
Diff: 1 Page Ref: 9-10
- 2) The anatomical position means the body is standing at attention with the palms facing forward and the thumbs pointing away from the body.  
Answer: TRUE  
Diff: 1 Page Ref: 13; Fig. 1.7
- 3) The elbow is proximal to the shoulder.  
Answer: FALSE  
Diff: 1 Page Ref: 12; Tbl. 1.1
- 4) The serous membrane that lines the peritoneal cavity wall is called visceral peritoneum.  
Answer: FALSE  
Diff: 2 Page Ref: 16-17
- 5) A major function of serous membranes is to decrease friction.  
Answer: TRUE  
Diff: 1 Page Ref: 16-17
- 6) The right hypochondriac region contains the majority of the stomach.  
Answer: FALSE  
Diff: 1 Page Ref: 17; Fig. 1.12

7) Lungs carry out an excretory function.

Answer: TRUE

Diff: 2 Page Ref: 7

8) Embryology concerns the structural changes that occur in an individual from conception through old age.

Answer: FALSE

Diff: 1 Page Ref: 2

9) A tissue consists of groups of similar cells that have a common function.

Answer: TRUE

Diff: 1 Page Ref: 4

10) It is important for any organism to maintain its boundaries, so that its internal environment remains distinct from the external environment surrounding it.

Answer: TRUE

Diff: 1 Page Ref: 4

11) Without some sort of negative feedback mechanism, it would be impossible to keep our body chemistry in balance.

Answer: TRUE

Diff: 1 Page Ref: 9

12) Regardless of the variable being regulated, all homeostatic control mechanisms have at least three interdependent components.

Answer: TRUE

Diff: 2 Page Ref: 9; Fig. 1.4

13) The epigastric region is located superior to the umbilical region.

Answer: TRUE

Diff: 1 Page Ref: 17; Fig. 1.12

## Multiple-Choice Questions

1) Histology would be best defined as a study of \_\_\_\_\_.

- A) cells
- B) tissues
- C) cell chemistry
- D) the gross structures of the body

Answer: B

Diff: 1 Page Ref: 2

2) The study of the heart may incorporate many aspects of anatomy but as a whole you would say it is \_\_\_\_\_ anatomy.

- A) microscopic
- B) gross
- C) developmental
- D) systemic

Answer: B

Diff: 1 Page Ref: 2