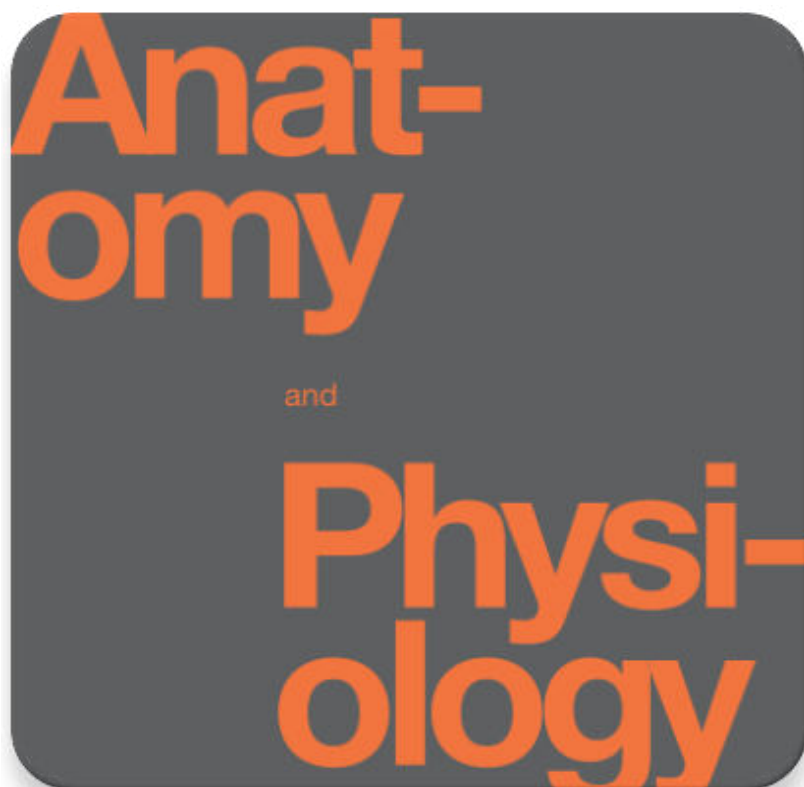


ANATOMY AND PHYSIOLOGY OPENSTAX TEST BANK

Table of Contents

- [Chapter 1. An Introduction to the Human Body](#)
- [Chapter 2. The Chemical Level of Organization](#)
- [Chapter 3. The Cellular Level of Organization](#)
- [Chapter 4. The Tissue Level of Organization](#)
- [Chapter 5. Integumentary System](#)
- [Chapter 6. Bone Tissue and the Skeletal System](#)
- [Chapter 7. Axial Skeleton](#)
- [Chapter 8. The Appendicular Skeleton](#)
- [Chapter 9. Joints](#)
- [Chapter 10. Muscle Tissue](#)
- [Chapter 11. The Muscular System](#)
- [Chapter 12. The Nervous System and Nervous Tissue](#)
- [Chapter 13. Anatomy of the Nervous System](#)
- [Chapter 14. The Somatic Nervous System](#)
- [Chapter 15. The Autonomic Nervous System](#)
- [Chapter 16. The Neurological Exam](#)
- [Chapter 17. The Endocrine System](#)
- [Chapter 18. The Cardiovascular System: Blood](#)
- [Chapter 19. The Cardiovascular System: The Heart](#)
- [Chapter 20. The Cardiovascular System: Blood Vessels and Circulation](#)
- [Chapter 21. The Lymphatic and Immune System](#)
- [Chapter 22. The Respiratory System](#)
- [Chapter 23. The Digestive System](#)
- [Chapter 24. Metabolism and Nutrition](#)
- [Chapter 25. The Urinary System](#)
- [Chapter 26. Fluid, Electrolyte, and Acid-Base Balance](#)
- [Chapter 27. The Reproductive System](#)
- [Chapter 28. Development and Inheritance](#)

TEST BANK



1. An Introduction to the Human Body

1. is the study of the larger structures of the body, those visible without the aid of magnification

- (A) Gross anatomy
- (B) Microscopic anatomy
- (C) Macroscopic anatomy
- (D) Physical anatomy

Ans A Diff Easy Page 8

2. The word “anatomy” comes from a Greek root that means “

- (A) To cut apart
- (B) To fix with
- (C) To view inside
- (D) To study exterior

Ans A Diff Easy Page 8

3. Dissection is still used in

- (A) Medical schools
- (B) Pathology labs
- (C) Anatomy courses
- (D) All of above

Ans D Diff Easy Page 8

4. Microscopic anatomy includes

- (A) Histology
- (B) Cytology
- (C) Both of above
- (D) None of above

Ans C Diff Easy Page 8

5 is the study of the structures that make up a discrete body system—that is, a group of structures that work together to perform a unique body function.

- (A) Regional anatomy
- (B) Systematic anatomy

- (C) Both of above
- (D) None of above

Ans C Diff Easy Page 9

6. Human physiology is the scientific study of the of the structures of the body and the ways in which they work together to support the functions of life.

- (A) Chemistry
- (B) Physic
- (C) Both Above
- (D) None of Above

Ans C Diff Medium Page 9

7. Homeostasis is the state of steady ----- maintained by living things.

- (A) Internal Condition
- (B) External conditions
- (C) Both Above
- (D) None of Above

Ans A Diff Easy Page 9

8. An organ is an anatomically distinct structure of the body composed of -----tissue types.

- (A) One
- (B) Two
- (C) Two or more
- (D) None of above

Ans C Diff Easy Page 11

9. In ----- organisms, including humans, all cells, tissues, organs, and organ systems of the body work together to maintain the life and health of the organism.

- (A) Unicellular
- (B) Bicellular
- (C) Multicellular
- (D) None of above

Ans C

Diff Easy

Page 14

10. The different organ systems each have different functions and therefore ----- roles to perform in physiology.

- (A) Unique
- (B) Different
- (C) Both Above
- (D) None of Above

Ans C

Diff Easy

Page14

11. A human body consists of trillions of cells organized in a way that maintains distinct

- (A) Internal compartments
- (B) External compartments
- (C) Both of above
- (D) None of above

Ans A

Diff Medium

Page 14

12. The organism level is the.....level of organization

- (A) Lowest
- (B) Highest
- (C) Medium
- (D) Extreme

Ans A

Diff Medium

Page 14

13. Which of the following mechanism is involved in releasing energy?

- (A) Catabolism
- (B) Anabolism
- (C) Both of above
- (D) None of above

Ans C

Diff Medium

Page 14

14. Every cell in your body makes use of a chemical compound, adenosine triphosphate (ATP), to

- (A) Store energy
- (B) Release energy

- (C) Both of above
- (D) None of above

Ans C Diff Medium Page 15

15is the ability of an organism to adjust to changes in its internal and external environments

- (A) Responsiveness
- (B) Movement
- (C) Locomotion
- (D) All of above

Ans A Diff Hard Page 15

16. Anatomic structures and physiological processes allow runners to coordinate the action of muscle groups and sweat in response to rising internal

- (A) Body temperature
- (B) Blood pressure
- (C) Hormone level
- (D) All of above

Ans A Diff Hard Page 16

17is all of the changes the body goes through in life.

- (A) Development
- (B) Growth
- (C) Reproduction
- (D) All of above

Ans A Diff Medium Page 16

18. Development includes the process of

- (A) Differentiation
- (B) Growth
- (C) Repair
- (D) All of above

Ans D Diff Medium Page 16

19. Humans have been adapting to life on Earth for at least the past